



The President's Message



From the beginning of my tenure as president, I have stressed the importance of listening. In fact in my inaugural speech in 2010, I said, “We need the ability to better listen—to listen with energy to the other person.”

At commencement the following year, I spoke of Sir William Osler, considered the Father of Modern Medicine, who said it best: “If you listen closely enough, the patient will tell you his diagnosis.”

This stretches beyond medicine, of course. It is important to genuinely listen to your co-workers, your friends, your family. Administrators also need to listen, which I vowed to do when I became president. In numerous forums we asked what was on your mind and you responded.

One result of that is the recently announced UM *shuttle*, a bus service that will transport, fare-free, University of Maryland students, faculty, and staff and University of Maryland Medical Center employees to stops as far away as Mount Vernon, Fort Avenue, and the Inner Harbor. In addition to ranging farther than the University’s previous Caravan service, UM *shuttle* offers reduced wait times and greater reliability. The location of the buses can be tracked by the free NextBus app for smartphones and in other ways described in the shuttle bus Q&A that begins on page 9.

The three routes of the shuttle service—BioPark, Mount Vernon, and Federal Hill—share a common hub between the School of Dentistry and the School of Pharmacy. The shuttle buses will operate from 6 a.m. until midnight during weekdays and 5 p.m. until midnight on weekends and during the summer. There will not be service on University holidays. Riders will need to show their University or Medical Center ID badges to board the buses, all of which will have a University security officer on board during the initial startup.

To make the shuttle even more convenient, each bus will be equipped with Wi-Fi so that riders can log on to their laptop computers, smartphones, and tablets. Bike racks also will be provided (beginning in October).

The shuttle reflects not only the University’s desire to listen and respond but also our growing commitment to sustainability. Through alternative transportation such as the shuttle, we reduce reliance on cars and the impact of carbon emissions on our environment.

To learn more, visit the UM *shuttle* information desk at the Southern Management Corporation Campus Center or visit www.umaryland.edu/shuttlebus.

If you have further questions about this or other topics, please try to attend our next group Q&A session on Thursday, Aug. 23, at noon at Westminster Hall. I’m also hoping many of you can join me for the launch of the 2012-13 President’s Symposium and White Paper Project on Monday, Aug. 27, at 5 p.m. at the Campus Center. Several speakers, myself included, will continue the interdisciplinary conversation begun in the previous academic year while shifting the focus from urban renewal to the importance of civility on a health sciences, human services, and law campus. Please try to attend.

Happy travels and see you on the shuttle!

Jay A. Perman, MD
President



Laurels

CAMPUSWIDE



Susan Dorsey Brown Professor in

Susan Dorsey, PhD, RN, FAAN, associate dean for research at the School of Nursing, and **Alan Faden, MD**, David S.



Alan Faden

Trauma and director of the Shock, Trauma, and Anesthesiology Research Center at the School of Medicine, received a five-year, \$3,247,093 grant from the National Institute of Nursing Research for “Spinal Mechanisms Underlying SCI-Induced Pain: Implications for Targeted Therapy.”

A student Cabinet met with and offered input to University commencement speaker Freeman A. Hrabowski III, PhD, president of the University of Maryland, Baltimore County. From the podium, he thanked **Anwar Graves** from the Francis King Carey School of Law; **Michael Ponikvar**, School of Dentistry; **Dennis Jones** and **Jewel Edmonds**, School of Nursing; **Lorraine Beraho**, School of Medicine; **Sierra Roach**, School of Social Work; **Anna Seekatz**, Graduate School; and **Joy Chou**, School of Pharmacy.

The first-place winners of this year’s Interprofessional Patient Management Competition for University students, which took place recently at the School of Pharmacy, were **Daniel Ceppos** from the School of Nursing; **Nancy Eddy**, School of Social Work; **Bonnie Gilbert**, School of Medicine; **Anna Le**, School of Pharmacy; and **Hanna Levinson**, Francis King Carey School of Law.

Nancy Patterson, MLS, community outreach coordinator for the National Network of Libraries of Medicine Southeastern/Atlantic Region at the Health Sciences and Human Services Library (HS/HSL), presented “Health Literacy: Challenges and Solutions” during the 28th Annual Florida Literacy Conference, held recently in

St. Petersburg. The following HS/HSL librarians also presented papers at the 2012 meeting of the Medical Library Association in Seattle: **Katherine Downton, MSLIS**; **Alexa Mayo, MLS**; and **Anna Tatro, MLS**.

The Staff Senate is proud to announce the following elected senators: **Colette Becker**, **Kimberly Curry**, **Dave DeLooze**, **Jennifer Guy-Aumiller**, **Tom McHugh**, **Carol McKissick**, **Kristie Nicols**, **Anthony “Tony” Brown**, **Dawn Flair**, **Pat Holmes**, **Libre’ Jones**, **Phyllis Lovito**, **Amshu Siddalingaswamy**, and **Yimei Wu**.

SCHOOL OF DENTISTRY

The School’s clinic at the University Health Center in College Park recently received a Community Partner Award from Resource Connections, a support organization for people with intellectual and developmental disabilities.



John Basile



Ashraf Fouad



Bernard Levy

John Basile, DDS, DMSc, assistant professor; **Ashraf Fouad, DDS, MS**, chair of the Department of Endodontics, Prosthodontics, and Operative Dentistry; and **Bernard Levy, DDS, MSD**, director of global operations, have been named top dentists by *Baltimore* magazine. It lists Fouad as one of the city’s top endodontists, and Basile and Levy as two of the top oral pathologists.



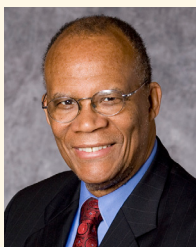
John Caccamese

John Caccamese, DMD, MD, FACS, associate professor, has been named vice chair of the Department of Oral-Maxillofacial Surgery.

FRANCIS KING CAREY SCHOOL OF LAW

The **Center for Dispute Resolution (C-DRUM)** has received the 2012 Commitment to Collaborative Conflict Resolution Award from Community Mediation Maryland. C-DRUM's **Roger Wolf, JD; Toby Guerin, JD; Barbara Grochal, MBA, MAT; and Stacy Smith** were lauded. The center also was recently awarded its first federal funding—a \$20,628 grant from the U.S. Department of Transportation to provide mediation training.

The **Environmental Law Clinic** will receive the American Bar Association's 2012 Award for Distinguished Achievement in Environmental Law and Policy during the association's annual meeting in Chicago in August. The clinic, directed by professor **Jane Barrett, JD**, also has received a \$150,000 grant from the Town Creek Foundation in Easton to support the clinic's work representing a nonprofit environmental group.



Larry Gibson

Jose Anderson, JD '84, and professor **Larry Gibson, LLB**, delivered the annual Thurgood Marshall Lecture during a recent event sponsored by the Student Bar Association. Gibson also recently received an honorary doctor of law degree from Morgan State University.



Deborah Thompson Eisenberg

C-DRUM Director **Deborah Thompson Eisenberg, JD**, has been appointed to the advisory board for the Maryland Mediation and Conflict Resolution Office. Eisenberg also was among 13 faculty members who presented scholarly papers or moderated panels during the 2012 International Conference on Law and Society, held in June in Honolulu. The other faculty were **Taunya Lovell Banks, JD; Maxwell Chibundu, JD, MA; Peter Danchin, LLB, LLM, JSD; Mark Graber, JD, PhD, MA; David Gray, JD, PhD, MA; Michelle Harner, JD; Amanda Pustilnik, JD; Shruti Rana, JD, MSc; Robert Rhee, JD, MBA; Brian Sawers, JD; Urska Velikonja, JD, LLM, LLB; and Marley Weiss, JD.**



Toby Guerin

Toby Guerin, JD, managing director of C-DRUM, has been chosen to serve on the Maryland State Bar Association's Alternative Dispute Resolution Section Council.

Dean **Phoebe A. Haddon, JD, LLM**, delivered the keynote address during the Association of American Law Schools' Workshop for New Law School Teachers, held in June in Washington, D.C.



Deborah Hellman

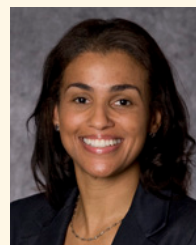
Deborah Hellman, JD, MA, Jacob A. France Research Professor of Law, organized the conference Philosophical Foundations of Discrimination Law, which was held recently at the law school. Oxford University Press is publishing papers from the conference, co-sponsored by the School and the

University of Toronto.



Peter Holland

"Defending Junk-Debt-Buyer Lawsuits," written by **Peter Holland, JD, MA**, visiting assistant professor, has been published in the *Clearinghouse Review—Journal of Poverty Law and Policy*. Holland also recently received an award from the Pro Bono Resource Center of Maryland.



Renee Hutchins

Associate professor **Renée Hutchins, JD**, and students from her 4th Circuit Decisions class were cited by the American Bar Association's Justice Center for providing the best summaries among those from law schools participating in the association's Media Alerts Project, in which law students write summaries of court decisions.



Sherrilyn Ifill

An essay by professor **Sherrilyn Ifill, JD**, regarding judicial support for racial profiling without mentioning race was published on CNN.com.



Robert Rhee

Essential Concepts of Business for Lawyers, a book written by **Robert Rhee, JD, MBA**, Marbury Research Professor of Law and co-director of the Business Law Program, has been published by Wolters Kluwer.



Rachel Simmons

Rachel Simmons, JD '11, received a Burton Award for Legal Achievement during a ceremony in June at the Library of Congress. Simmons won for her article "Legislating After Janice M: The Constitutionality of Recognizing De Facto Parenthood in Maryland."



Michael Van Alstine

International Business Transactions: A Problem-Oriented Coursebook, co-written by professor **Michael Van Alstine, JD, MJurComp, DrJur**, has been published by Thomas Reuters Westlaw.



Deborah Weimer

Deborah Weimer, JD, LLM, Carole and Hanan Sibel Research Law School Professor, wrote the chapter "Patients and Families Living With HIV/AIDS" for the book *Poverty, Health, and Law: Readings and Cases for Medical-Legal Partnership*, which was recently published.

SCHOOL OF MEDICINE

More than 30 oral and poster presentations were made by faculty and residents in the **Department of Surgery's Division of Transplantation** during the American Transplant Congress held in Boston in June.



Alessio Fasano

U.S. patents have been issued for: "Pharmaceutical Compositions for Inhibiting Intestinal Permeability," invented by **Alessio Fasano, MD**, director of the Center for Celiac Research and the Mucosal Biology Research Center, and postdoctoral research fellow **Tamara Watts, MD, PhD**; "Techniques for Determining the Effects on a System of a Component That Has Four States," invented by **Lawrence Goldman, PhD**, professor emeritus; and "Directing Meniscal Tears in Noninvasive Scans," the inventors of which include **Nabile Safdar, MD**, assistant professor, and **Eliot Siegel, MD**, professor.

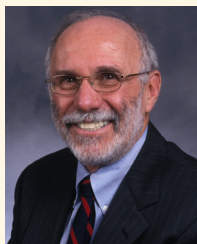


Anthony Gaspari

Anthony Gaspari, MD, Albert Shapiro, MD, Endowed Professor in Dermatology and chair of the Department of Dermatology, has been appointed the medical advisor to the Baltimore chapter of the National Eczema Association.



Departing Rosewood, a documentary produced by **Susan Hannah Hadary, MA**, director of Med-School Maryland Productions (MMP), and **John Anglim, MA**, director of cinematography at MMP, won an Emmy Award from the National Capital Chesapeake Bay chapter of the National Academy of Television Arts and Sciences. MMP produces films and videos and develops websites.



Myron Levine

Myron Levine, MD, DTPH, Grollman Distinguished Professor and director of the Center for Vaccine Development, has won the American Society for Microbiology's Maurice Hilleman/Merck Award. Only given the past four years, the prestigious award recognizes major contributions to pathogenesis, vaccine discovery, vaccine development, and control of vaccine-preventable diseases.



Linda Lewin

Linda Lewin, MD, associate professor, has been named associate chair for educational programs in the Department of Pediatrics.

Terrence Mulligan, DO, MPH, assistant professor, has been appointed vice chair of the International Medicine Committee of the American Academy of Emergency Medicine.



Steven Munger

Steven Munger, PhD, professor, was recently elected program chair for the Association for Chemoreception Sciences annual meeting in 2014.

Mayur Narayan, MD, MPH, MBA, assistant professor, recently received the 2012 Golden Apple Award for Teaching Excellence from the American Medical Student Association.



E. Albert Reece

E. Albert Reece, MD, PhD, MBA, dean and John Z. and Akiko K. Bowers Distinguished Professor and the University's vice president for medical affairs, is the 2012 winner of the Norbert Freinkel Lecture Award, presented by the American Diabetes Association (ADA). Reece delivered this year's Norbert Freinkel Lecture, "Unraveling the Biomolecular Mechanisms of Diabetic Embryopathy," during the ADA's scientific sessions held in June in Philadelphia.



Yvette Rooks

Yvette Rooks, MD, CAQ, FFAFP, vice chair of family and community medicine, received the John M. Dennis Award from the Western Maryland Area Health Education Center for her support of professional health education in Western Maryland.

"Ill, Itinerant, and Insured: The Top 20 Users of Emergency Departments in Baltimore City," an article co-written by **Stephen Schenkel, MD, MPP**, associate professor, was published recently in *The Scientific World Journal*.



Patricia Shearer

Patricia Shearer, MD, MS, FAAP, division chief of pediatric hematology/oncology, was appointed by the American Academy of Pediatrics Hematology/Oncology Executive Committee to the Best Pharmaceuticals for Children Act Working Group, sponsored by the Eunice Kennedy

Shriver National Institute of Child Health and Human Development.



Kevin Sheth

Kevin Sheth, MD, assistant professor, was recently named to the board of directors of the Brain Injury Association of Maryland.

James Waltz, PhD, assistant professor, received a five-year, \$1.3 million grant from the National Institute of Mental Health to conduct studies of motivational deficits in schizophrenia patients.

Student **Heather Wied** received a \$195,422 research service award from the National Institute on Drug Abuse for her project “The Role of Dopaminergic Error Signaling in Outcome-Specific Learning.”

SCHOOL OF NURSING



The School graduated the largest class of nurses in Maryland during the University’s commencement ceremony at 1st Mariner Arena in May. The 648 graduates included 282 recipients of Bachelor of Science in Nursing degrees, 333 Master of Science graduates, 21 Doctor of Nursing Practice degree recipients, and 12 PhD graduates.

All four students who submitted applications for the highly competitive American Cancer Society Graduate Scholarships in Cancer Nursing Practice received awards of \$20,000 each over two years. The winners are **Caitlin Carlock, Erin Cronin, Laura Schoch, and Marie Swisher. Deborah McGuire, PhD, RN, FAAN**, professor, mentored the students when they applied for the scholarships.



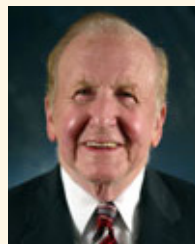
Jeffrey Johnson

Jeffrey Johnson, PhD, director of the Office of Global Health, received the 2012 Master of Public Health (MPH) Outstanding Faculty Teacher/Mentor Award as chosen by MPH students during the School of Medicine’s recent Department of Epidemiology and Public Health awards ceremony.

Gail Schoen Lemaire, PhD, PMH/CNS, director of the Clinical Nurse Leader program, received a one-year, \$50,000 grant from the Robert Wood Johnson Foundation New Careers in Nursing scholarship program.

Lisa Rowen, DNSc, MS, RN, FAAN, senior vice president for patient care services and chief nursing officer at the University of Maryland Medical Center, has been elected to the Maryland Hospital Association’s executive committee.

SCHOOL OF PHARMACY



Alfred Abramson

Alfred Abramson, RPh, assistant professor, and clinical specialists **Bryan Hayes, PharmD**, and **Carla Williams, PharmD**, were among those named preceptors of the year. Abramson also recently received the Seidman Distinguished Achievement Award from the Maryland Pharmacists Association (MPhA).



Kellie Chew

Student **Kellie Chew** has received a scholarship from the MPhA.



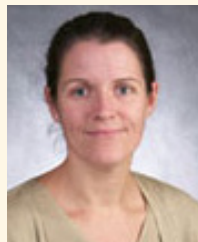
Heather Congdon

Heather Congdon, PharmD, CACP, CDE, assistant dean for the Shady Grove campus, has been accepted into the American Association of Colleges of Pharmacy’s Academic Leadership Fellows Program.



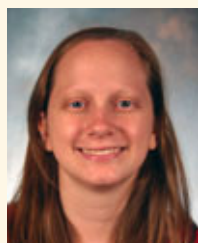
Susan dosReis

Susan dosReis, PhD, associate professor, is a finalist for the Public Health Systems Research Article of the Year Award from the professional society AcademyHealth.



Suzanne Doyon

Suzanne Doyon, MD, medical director at the Maryland Poison Center, finished in first place in the Maryland Health Data Innovation Contest. Entrants submit ideas for creative use of data to improve the health of Marylanders.



Sarah Dutcher

Student **Sarah Dutcher** has received a predoctoral fellowship from the American Foundation for Pharmaceutical Education.



Stuart Haines

Stuart Haines, PharmD, vice chair for clinical services, was named the 2012 B. Olive Cole Honorary Alumnus by the School's alumni association.

Amy Ives, PharmD, affiliate assistant professor at the Shady Grove campus, was named to the Eastern States Residency Conference Advisory Board.

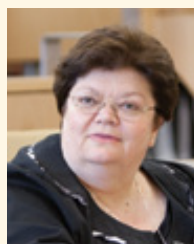


Maureen Kane

Maureen Kane, PhD, assistant professor, was recently named the School's American Association of Colleges of Pharmacy Teacher of the Year.

Cherokee Layson-Wolf, PharmD, assistant dean for experiential learning, is a co-recipient of the American Association of Colleges of Pharmacy/National Community Pharmacists Association Innovative Medication Adherence Educators Challenge Award.

Student pharmacists **Kashelle Lockman, Karen Partlow**, and **Alexandra Rouse** won the American College of Clinical Pharmacy's local Clinical Pharmacy Challenge.



Mary Lynn McPherson

Mary Lynn McPherson, PharmD, vice chair for education in the Department of Pharmacy Practice and Science, recently received the Mentor Award from the MPhA. She also received a presidential citation from the Hospice and Palliative Nurses Association.



Robert Michocki

Robert Michocki, PharmD, professor, was named Teacher of the Year by the School's Class of 2012.

Student **Emily Reese** has received a predoctoral fellowship from the Pharmaceutical Research and Manufacturers of America Foundation.



David Roffman

David Roffman, PharmD, CDE, professor, has been named to the Board of Pharmacy Specialties' Practice Analysis Task Force in Cardiology.



Ramin Samadani

Student **Ramin Samadani** recently received a Ruth L. Kirschstein National Research Service Award from the National Institutes of Health.



Deborah Sturpe

Deborah Sturpe, PharmD, associate professor, has received a master's degree in instructional systems development from the University of Maryland, Baltimore County.



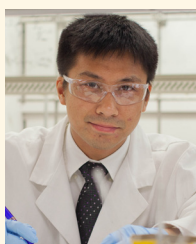
Kathleen Pincus

Articles by **Asha Tata, PharmD**, clinical specialist, and by assistant professors **Sandeep Devabhaktuni, PharmD**; **Jeffrey Gonzales, PharmD, FCCM**; **Kathleen Pincus, PharmD**; **Neha Sheth, PharmD**; and **Kristin Watson, PharmD**, were recently published. Pincus also has been selected to participate in the American Society of Health-System Pharmacists (ASHP) Foundation's Research Boot Camp.



James Trovato

James Trovato, PharmD, MBA, associate professor, has been named chair of the ASHP's House of Delegates for 2012-2013.



Jeremy Yap

Student **Jeremy Yap** recently received a predoctoral fellowship from the American Foundation for Pharmaceutical Education.



Julie Zito

Julie Zito, PhD, MS, professor, has been named a fellow of the International Society for Pharmacoepidemiology.

SCHOOL OF SOCIAL WORK

Dean **Richard P. Barth, PhD, MSW**, has been appointed to the National Scientific Advisory Committee of the Kempe Center for the Prevention and Treatment of Child Abuse and Neglect.



Lisa Berlin

Lisa Berlin, PhD, MS, associate professor, has been nominated and approved to join Maryland's Early Child Research Advisory Group, which advises the state on use of research and research resources.



Becky Davis

Becky Davis, director of organizational social work for the Social Work Community Outreach Service, serves as an AmeriCorps grant reviewer for the Governor's Office on Service and Volunteerism.

Questions and Answers

Because of widespread interest in the topic, we are devoting this issue's Q&A section to the UM shuttle, the University's new bus system that Dr. Perman describes in his message on page 1.



QUESTION:

Is it one bus we are talking about and where does it go?

ANSWER:

The UM *shuttle* is a fleet of buses that follow three routes—BioPark (main campus and the BioPark and its surrounding community), Mount Vernon (main campus and the Mount Vernon cultural district), and Federal Hill (main campus and areas of downtown region such as the Inner Harbor and Federal Hill). UM *shuttle* routes and schedules are available online at www.umaryland.edu/shuttlebus and in print at the Southern Management Corporation (SMC) Campus Center and in school lobbies.



QUESTION:

What are the hours?

ANSWER:

The UM *shuttle* runs from 6 a.m. to midnight on weekdays and 5 p.m. to midnight on weekends and during the summer. There is no service on University holidays.

QUESTION:

Isn't the shuttle like the Caravan service the University used to offer? I didn't like that much.

ANSWER:

The UM *shuttle* is much improved. In addition to the routes traveling much farther, the service offers a tracking system to know when the buses are coming and going, reduced wait times, more stops, and greater reliability and security. Each bus also offers Wi-Fi, bike racks*, and other amenities, including handicapped accessibility*. It's just a better system.

*Please note that UM *shuttle* will not be wheelchair accessible or accommodate bicycles until October.



QUESTION:

How much does it cost?

ANSWER:

The UM *shuttle* is free to University students, faculty, and staff and employees of the University of Maryland Medical Center, who must show a University or Medical Center ID card at time of boarding.



QUESTION:

Where can I board the bus?

ANSWER:

The UM *shuttle* hub, where the three routes of the shuttle meet, is located at the corner of Pine and Baltimore streets. But there are many stops that are marked with UM *shuttle* signage and the NextBus logo. The stops also are listed at www.umaryland.edu/shuttlebus/routes/.

QUESTION:

What is NextBus?

ANSWER:

NextBus is a real-time system that provides arrival information for passengers using UM *shuttle* routes. Passengers may use one of five methods to obtain this information for any of the bus stops served by UM *shuttle* buses. This system is based on GPS technology and allows UM *shuttle* to quickly monitor where the buses are as well as provide arrival times. The NextBus app is free and works with other bus systems.



QUESTION:

How can I use NextBus to check arrival times?

ANSWER:

There are five ways:

- Internet-enabled cellphone/smartphone
- SMS text messages
- Call 410-706-BBUS
- Visit: www.umaryland.edu/shuttlebus/nextbus
- Digital displays at the UM *shuttle* information desk at the Southern Management Corporation Campus Center and throughout the University

For details, visit www.umaryland.edu/shuttlebus.



QUESTION:

How often do the buses run?

ANSWER:

Buses run every half-hour on the BioPark route, every 35 minutes on the Mount Vernon route, and every 45 minutes on the Federal Hill route.

QUESTION:

You mentioned security. Are the buses safe?

ANSWER:

Members of the University Department of Public Safety, including Police Chief Tony Williams, MS, were on the interdisciplinary committee that came up with the blueprint for UM *shuttle*, which is based on the College Park shuttle system. A University security officer will be on each of the buses during the initial startup and security will be assessed as we have experience with this service.



QUESTION:

A guest speaker is coming to my school and we'd like to take her to the National Aquarium. Can she ride the shuttle?

ANSWER:

Yes, if you join her. Non-University affiliated individuals are permitted to ride UM *shuttle* routes when accompanied by a student, faculty, or staff member who has a valid University or Medical Center ID.



QUESTION:

I am confined to a wheelchair. Is there any way I can use the shuttle?

ANSWER:

Yes, the buses are accessible to people with physical disabilities and in compliance with the American Disabilities Act. **(as of October)*

QUESTION:

With money being so tight, how is this being paid for?

ANSWER:

The University of Maryland, College Park Department of Transportation is leasing the UM *shuttle* buses to UMB, which is using funds from a variety of sources including student fees.



QUESTION:

Sometimes we like to take a nice bottle of wine with us for dinner in Little Italy. Can we carry alcohol on the UM *shuttle*?

ANSWER:

As long as it's not open. Passengers may not carry or drink from open containers of alcohol while onboard. Food and non-alcoholic drinks can be consumed on the buses.



QUESTION:

My husband and I want to check out the *Paradise Imagined* exhibit at the Walters Art Museum. If I show my ID, can he board the UM *shuttle* with me?

ANSWER:

Yes, non-University affiliated individuals are permitted to ride UM *shuttle* routes when accompanied by a student, faculty, or staff member who has a valid University or Medical Center ID.

QUESTION:

How about if I want to take my 5-year-old son to an Orioles game?

ANSWER:

Yes, for the same reason.



QUESTION:

What if I ride the shuttle a few times and don't like it? Who can I tell?

ANSWER:

Suggestions on improving the UM *shuttle* service are welcomed and can be submitted at www.umaryland.edu/shuttlebus/about/suggestion.html. Riders also can mail suggestions to the Department of Transportation at 622 W. Fayette St, second floor (Pearl Street Garage) Baltimore, Md. 21201.