



# The President's Message



*D*ostoevsky once said, “The soul is healed by being with children,” and I couldn’t agree more. I love kids, which is one of the reasons I became a pediatrician, and why I still see patients every week in my President’s Clinic.

Children are our future, which is why the upcoming Summit on Childhood Obesity is such an important part of the University’s mission. How alarming is the problem? It’s estimated that approximately one-third of our children are either overweight and at risk for obesity or, frankly, are obese. One in three children! The consequences of obesity are seen in so many of the ills that we are challenged with as adults, from cardiovascular disease to diabetes to gastrointestinal disorders to reproductive disorders.

And the seeds for that are planted in childhood, when our children eat the wrong foods and don’t exercise enough, sitting on the couch watching television or playing video games that show people running when they should be outside doing it themselves.

One of our goals for the summit on Nov. 15-16 at the Hilton Baltimore is to cultivate a better understanding of the effects of childhood obesity and develop an action plan to promote a healthier lifestyle.

The University of Maryland has partnered with the state Department of Health and Mental Hygiene (DHMH) to gather stakeholders from across the state for the summit, such as the American Academy of Pediatrics, our government leaders, policymakers, public health officials, community groups, churches, schools, and parents. We have to tackle this as a community.

We are proud to announce we have received nearly \$150,000 in funding for our initiative from important partners such as the National Institutes of Health, DHMH, the University of Maryland Medical System, CareFirst BlueCross BlueShield, Children’s Hospital at Sinai, and KidzTable.

I extend thanks to the many people here at the University who are helping in these efforts. As a University devoted to excellence in education, research, patient care, and public service, this growing epidemic warranted our attention and we are responding. I am enormously proud of our taking the lead in this area. Read more at <http://obesitysummit.umaryland.edu/>. And if you aren’t among the many people on campus who “took the pledge” for better health either at FallFest last month or online, please do so at: <http://obesitysummit.umaryland.edu/get-involved/childhood-obesity-pledge/>. We can set an example for our children and our community by living and eating more healthfully ourselves.

Pride in our work also drives our annual Founders Week activities, when we celebrate the achievements of our students, faculty, staff, alumni, and philanthropic partners. The week of notable activities begins with the Black-Tie Gala on Oct. 25. Andrea and I look forward to seeing you there or at events like the student cookout, the staff luncheon, the Researcher of the Year lecture by Gary Fiskum, PhD, and the Entrepreneur of the Year presentation with Scott Strome, MD, FACS. For the times and places, please visit <http://founders.umaryland.edu/>.

Lastly, I was glad to resume our Q&A sessions on Sept. 26 at the Southern Management Corporation Campus Center. Many of the questions and answers discussed that day can be found starting on Page 6. I look forward to the Q&A at the School of Pharmacy on Monday, Oct. 17, at noon. Of course, you can send me questions anytime at <http://um.umaryland.edu/president/ask/>.

All the best,

Jay A. Perman, MD



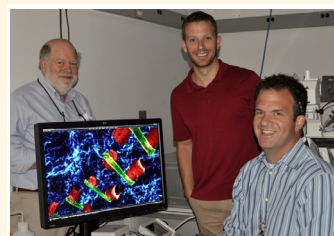
# Laurels

## CAMPUSWIDE



Joel Greenspan

**Joel Greenspan, PhD**, professor and chair of the Department of Neural and Pain Sciences in the School of Dentistry, received a \$250,000 combined grant with **Vadim Morozov, MD**, assistant professor at the School of Medicine, for a randomized double-blind study of Duloxetine and chronic pelvic pain. **Ronald Dubner, DDS, PhD**, professor at the dental school, is a consultant on the project.



W. Jonathan Lederer, Benjamin Prosser, Christopher Ward

In a recent issue of the journal *Science*, researchers **Christopher Ward, PhD**, associate professor, School of Nursing; **W. Jonathan Lederer, MD, PhD**, professor, School of Medicine, and director, University of Maryland Center for Biomedical Engineering and Technology (BioMET); and **Benjamin Prosser, PhD**, postdoctoral fellow, BioMET, describe for the first time a mechanism by which heart cells communicate to regulate the heartbeat. Enabling the discoveries was the researchers' invention and development of a new biological adhesive, MyoTak.

## SCHOOL OF DENTISTRY



Li Mao

**Li Mao, MD**, associate dean of research and chair of the Department of Oncology and Diagnostic Sciences, will be featured in an upcoming cancer research article in *International Innovation*.



David Seminowicz

**David Seminowicz, PhD**, assistant professor in the Department of Neural and Pain Sciences, has been chosen to receive the 2012 John C. Liebeskind Early Career Scholar Award from the American Pain Society. The award will be presented in Honolulu in May during the American Pain Society's annual scientific meeting.

## FRANCIS KING CAREY SCHOOL OF LAW

*Cyber Civil Rights: Combating Hate in the Information Age*, a book written by **Danielle Citron, JD**, the Lois K. Macht Research Professor of Law, has been accepted for publication by Harvard University Press.

Alumnus and visiting assistant professor **Peter Holland, JD '92, MA**, was instrumental in getting 3,500 debt buyer cases dismissed, resulting in nearly \$10 million in debt relief to consumers. Holland talked about the case and its impact on *Midday With Dan Rodricks* on radio station WYPR.

**Sherrilyn Ifill, JD**, professor, participated in two recent panel sessions previewing the U.S. Supreme Court's upcoming term. One session was sponsored by the American Constitution Society for Law and Policy and was hosted by the National Press Club in Washington, D.C.; the other was sponsored by the Woodrow Wilson International Center for Scholars in Washington.

**Rena Steinzor, JD**, professor and an expert in environmental law, wrote a *Baltimore Sun* Op-Ed in September, "Breathing Uneasily: Obama Retreats on Tightening Smog Standards."

Senior staff at the Center for Health and Homeland Security (CHHS) were sought by news media for comment and analysis on the summer East Coast earthquake and on Hurricane Irene. **Michael Greenberger, JD**, director of CHHS and professor at the law school, was among the first experts interviewed by WTOP News Radio in Washington, D.C., after the quake. Washington television stations spoke to **Adrian Wilairat, JD**, CHHS associate director, about the earthquake, and **Christina Crue, MS, MEP**, senior policy analyst, was quoted in *The Washington Post*. Later that week, Greenberger and Wilairat were asked about hurricane preparedness and recovery by Baltimore TV station WBAL and by C-SPAN.

## SCHOOL OF MEDICINE

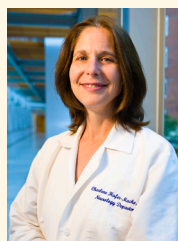
**Rolf Barth, MD**, associate professor, presented “Single-Port Donor Nephrectomy for Living Donor Kidney Transplantation” during the Agency for Healthcare Research and Quality annual conference, held in September in Bethesda, Md.



Bartley Griffith (center)

Surgeons at the University of Maryland Medical Center (UMMC), led by **Bartley Griffith, MD**, the Thomas E. and Alice Marie Hales Distinguished

Professor in Transplant Surgery at the medical school, and chief of the Division of Cardiac Surgery and director of heart and lung transplantation at UMMC, have performed the first U.S. transplantation of lungs treated with an experimental repair process before surgery. The procedure is part of a five-center national clinical research trial to evaluate the efficacy of repairing, before transplant, lungs that might otherwise have been passed over as unsuitable for organ donation. The results of this study, if successful, could significantly expand the number of transplantable lungs available to patients.



Charlene Hafer-Macko

**Charlene Hafer-Macko, MD**, associate professor, was elected to the executive board of the Myasthenia Gravis Foundation of America. She was also the keynote speaker during the foundation’s 2011 national conference, held recently in Baltimore.

**Marc Hochberg, MD, MPH**, professor and head of the Division of Rheumatology and Clinical Immunology, received the Roger Demers Prize from the Laurentian Conference of Rheumatology during the conference’s annual meeting in Mont Tremblant, Quebec. Hochberg also presented two lectures during the meeting: “Epidemiology of Osteoarthritis: Update 2011” and “Clinically Relevant Outcomes in Osteoarthritis.”



Richard Lichenstein

**Richard Lichenstein, MD**, associate professor in the Department of Pediatrics, represented the American Academy of Pediatrics during a recent news conference on crib safety, held in Washington, D.C. Lichenstein was also interviewed by *American Baby Magazine*.



Igor Lukashevich

**Igor Lukashevich, MD, PhD**, associate professor and researcher in the Institute of Human Virology, received a five-year, \$868,007 award from the National Institute of Allergy and Infectious Diseases for his work “Development of New Bivalent Cross-Protective Arenaviral Vaccines.”

**Amal Mattu, MD**, professor and vice chair of the Department of Emergency Medicine, recently received the Residency Director Award from the Emergency

Medicine Residents' Association. The award was presented during the annual meeting of the Society for Academic Emergency Medicine, held in Boston.



Ligia Peralta

**Ligia Peralta, MD**, associate professor in the Department of Pediatrics and chief of the School's Division of Adolescent and Young Adult Medicine, was recently honored with the Robert S. Rixse Memorial Lecture Award at the Children's National Medical Center in Washington, D.C.



Andrew Pollak

**Andrew Pollak, MD**, professor at the School and associate director of trauma at the R Adams Cowley Shock Trauma Center, has been named a member of the Governor's Emergency Management Advisory Council. The council advises Maryland Governor Martin O'Malley on all matters relating to emergency management.



Stephen Schenkel

**Stephen Schenkel, MD, MPP**, assistant professor in the Department of Emergency Medicine, presented "The Morbidly Obese Patient in the Emergency Department" and "Simulation and Patient Safety in Emergency Medicine" during the Asian Conference for Emergency Medicine, held recently in Bangkok.

**Barney Stern, MD**, professor in the Department of Neurology, was the director of the education colloquium and presenter of the A.B. Baker Lifetime Achievement and A.B. Baker Teacher Recognition awards during the American Academy of Neurology's recent annual meeting in Honolulu.

## SCHOOL OF NURSING



R. Barker Bausell

**R. Barker Bausell, PhD**, who served on the School faculty for 30 years before retiring in January, was recently named professor emeritus. An accomplished instructor, author, editor, biostatistician, mentor, and researcher, Bausell is the 11th School of Nursing faculty member to obtain emeritus status.

**Joan Davenport, PhD, RN**, has been named vice chair of the Department of Organizational Systems and Adult Health. She has served as an assistant professor in the department since 2005.



Susan Dorsey

**Susan Dorsey, PhD, RN**, associate professor and director of the Center for Pain Studies, and **Robin Newhouse, PhD, RN, NEA-BC**, associate professor and chair of the Department of Organizational Systems and Adult Health, are being inducted this fall as fellows in the American Academy of

Nursing. Newhouse also recently received a \$1,126,239 grant from the Health Resources and Services Administration for her project "Enhancing the Doctor of Nursing Practice (DNP) Program to Improve Healthcare for Underserved Populations of Maryland." The project aims to bolster the School of Nursing's DNP program in ways that will benefit executive nurse leaders and the communities where they live and work.



Jeanne Geiger-Brown

**Jeanne Geiger-Brown, PhD, RN**, associate professor and co-director of the Work and Health Research Center, received a two-year, \$275,000 grant from the National Institute for Occupational Safety and Health for her

study “Pilot of Comprehensive Intervention to Improve Alertness in Nurses.” The work focuses on improving the amount and quality of sleep among nurses working 12-hour shifts.



Shari Simone

**Shari Simone, DNP, MS, CPNP-AC, FCCM**, clinical instructor, received the Outstanding Doctor of Nursing Practice Graduate Award during the School commencement in May. Simone is also the clinical program manager and lead nurse practitioner in the Pediatric Intensive Care Unit at the University of Maryland Medical Center.



Regina Twigg

**Regina Twigg, DNP, MS, RN**, assistant professor, received a \$294,709 grant from the Health Resources and Services Administration for her project “Equipment for Patient Safety in Undergraduate Education.” Funds from the grant will provide equipment to enhance the School’s simulation labs.

## SCHOOL OF PHARMACY



Lauren Angelo

**Lauren Angelo, PharmD, MBA**, assistant professor, participated in “Help Stop the Flu,” a recent panel presentation on the seasonal flu at the Universities at Shady Grove.



Natalie D. Eddington

**Natalie D. Eddington, PhD, FAAPS**, professor and dean, has received the Distinguished Alumnus Award from the Howard University College of Pharmacy’s alumni association.

The International Society for Pharmacoepidemiology has presented a Maryland Poison Center study team—led by **Wendy Klein-Schwartz, PharmD, MPH**, associate professor—with its annual award for the best article in the journal *Pharmacoepidemiology and Drug Safety*. The article examines the study team’s research on therapeutic errors among toddlers after the 2007 removal from the marketplace of some over-the-counter cough and cold medications for children under age 2.

**Ting Wang**, a graduate student in the Department of Pharmaceutical Sciences, has received a fellowship from United States Pharmacopeia.

## SCHOOL OF SOCIAL WORK



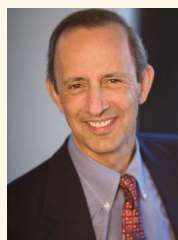
Charlotte Bright



Paul Sacco

Assistant professors **Charlotte Bright, PhD, MSW**, and **Paul Sacco, PhD, MSW**, have been awarded a two-year, \$100,000

grant from the National Institute on Drug Abuse—part of the National Institutes of Health (NIH)—to study gender-specific trajectories of risk behavior regarding substance abuse and delinquency. It is the School’s first direct NIH grant. Findings from the study may help inform evidence-based strategies for substance use and delinquency prevention and intervention. **Laura Stapleton, PhD**, associate professor at the University of Maryland, Baltimore County, is a co-investigator on the study.



Geoffrey Greif

“Working With Urban African American Fathers: The Importance of Service Provision, Joining, Accountability, the Father-Child Relationship, and Couples Work,” co-written by **Geoffrey Greif, DSW, MSW**, professor, was published in the *Journal of Family Social Work*.



Howard Palley

**Howard Palley, PhD, MS**, professor emeritus and distinguished fellow, delivered the paper “Long-Term Care in Quebec: Considerations of Appropriateness and Quality of Care” during the American Political Science Association annual meeting, held in September in Seattle.



Corey Shdaimah

*Change Research: A Case Study on Collaborative Methods for Social Workers and Advocates*, a book co-written by **Corey Shdaimah, PhD, LL.M, LL.B**, assistant professor, was published by Columbia University Press.



Kristen Woodruff



Bethany Lee

“Identifying and Predicting Problem Behavior Trajectories Among Pre-school Children Investigated for Child Abuse and Neglect,”

written by doctoral student **Kristen Woodruff, MSW, LGSW**, and **Bethany Lee, PhD, MSW**, assistant professor, was published in the journal *Child Abuse & Neglect*.

# Questions and Answers

The following are excerpts of questions and answers from Dr. Perman’s Q&A on Sept. 26 at the Southern Management Corporation Campus Center. Some questions came from the audience and others were sent to Dr. Perman during the summer at his Q&A email line at <http://um.umd.edu/president/ask/>.

## QUESTION:

How come the employee service awards are held at the Marriott when we have a beautiful new Southern Management Corporation Campus Center that also may be more economical amid the state budget crisis?

## ANSWER:

The program has so grown in participation over the years that this place cannot comfortably house the event, which is now drawing more than 300 participants and guests.



## QUESTION:

How come retirees are not included in the employee service awards? Why do they get no recognition after giving many years of service?

## ANSWER:

Retirees who achieve one of the service thresholds are invited to the luncheon even if they are no longer employed. We try to recognize the retirees. They often are honored by the schools and departments in which they work, but I am going to ask Human Resources to explore ways that we can do a better job of recognizing people when they retire.



## QUESTION:

Is UM operating in the red or in the black? Where do you see the operating budget in two years?

## ANSWER:

It is an appropriate question for our times. The simple answer is we’re not allowed to operate in the red [losing money]. By state mandate, we operate in the black, but as you know we often have to make significant reductions in spending each year to achieve this. In the interest of full disclosure, the initial information we are beginning to get for the outlook for fiscal year 2013, the budget we need to put in place for next year, is not encouraging. The state is facing a billion-dollar budget deficit so it’s possible we may have to make further reductions in our operating budget. And just

like in our personal lives, expenses go up. Costs keep rising, be it for utilities or benefits like health care. I would tell you while it's not encouraging I'm pretty confident that with our leadership team and the people who work here we will do what we do every year, which is work smarter, figure out what we can do and can't do, and we'll continue to operate in the black.



### QUESTION:

When you close the campus early, for example the Friday before the Memorial Day weekend, why are employees of the law school not allowed to leave?

### ANSWER:

Now I did not close the University early on that day. Sometimes we have to close the campus for weather-related issues or events like the Baltimore Grand Prix when, yes, it was my decision to close the campus for the first day of the race that Friday. But when people know that other units have gone home, I didn't do it. It has to be at the discretion of the dean or the vice president responsible for that school or department, not me. The dean or vice president has to authorize a flexible work schedule for that day and then you use your usual leave process to request and report time off. So there might be a perception that people in a particular unit have gone home early and I sanction that as long as the rules are followed. But it isn't Universitywide.



### QUESTION:

Are there any plans to allow for a possible paperless submission of travel authorization for authorized University travel? This seems to be long overdue.

### ANSWER:

The campus implemented a new electronic travel request and expense reimbursement system with a pilot group of departments just this past July. Implementation for the entire campus is targeted for late October so you will be hearing more about this.

Anybody want to add something?

Kathy Byington, vice president for administration and finance: The pilot went well. The people who have used it are pleased with the system. It allows you to electronically fill out your travel request and reimbursement request and rout it through the system. It provides the employee and supervisor a complete online way of tracking where things are in the system. We've been pleased with it so far and we're excited to see it go across campus.



### QUESTION:

I was told by my supervisor when traveling for business I can't get reimbursed for any tolls that my E-ZPass pays since a receipt is an issue. I offered to bring in my monthly E-ZPass statement and was told this still would not be acceptable. It seems a bit ludicrous since E-ZPass is administered by the state and we are a state agency. Is that still the case or did my supervisor misinform me?

### ANSWER:

Yes, travelers must attach detailed receipts to support expenses. In general, statements are not considered detailed enough. But in the case of tolls that are paid using the E-ZPass system, the details of the statement are itemized enough to support the expense so they can be used in place of a receipt.



### QUESTION:

Why doesn't the University change the policy and process to allow for University-related business travel, particularly hotels, to be charged to ProCard. There are checks and balances already in place to avoid misuse. Right now staff who don't have credit cards or can't charge on them for various reasons are prohibited from traveling unless a hotel takes a purchase order. Most hotels do not.

### ANSWER:

In checking with Financial Services, I am told we have recently implemented a new process for audit review of key card transactions. The system internal auditor has reviewed our key card process in purchasing and compliance in follow-up to the legislative audit of two years ago and found that despite improvements we still have more work to do. So I'm going to ask Financial Services to retain this suggestion and consider it once we have the necessary improvements in place to be compliant.



### QUESTION:

I work in the Lexington Building and sometimes my colleagues and I come in on a Saturday to catch up or get ahead on a project. We have to pay to park on the street as our garage, the Saratoga Garage, is closed. The closest open garage is the Grand. We have an open-air parking lot right beside our building. Could we have a gate with a badge scanner installed there so we could use that lot or is there another solution?

### ANSWER:

There is another solution that I personally am familiar with. Since I sometimes like to come in on a Saturday or a Sunday to the Saratoga Building and there is a garage that I use since I can't use Saratoga and that is the Lexington Garage, which is just down the street on Lexington. It is "students only" during the week, which may have caused this confusion, but on weekends it is open to anyone who needs parking on that part of the campus. And that garage is open and staffed 24/7.



### QUESTION:

In the FMLA (Family Medical Leave Act) policy there are provisions for immediate family. However, there is nothing in there for taking care of a roommate or partner. Can you look at implementing acceptance for someone in your household who you care for who has a disease? My roommate has cancer, stage 4, and there's nothing to cover this because she's not in my family though we have lived together for 17 years.

### ANSWER:

FMLA is a federal statute that USM follows. Currently FMLA does not grant coverage for domestic partners and same-sex relationships. The law would need to be changed. We're bound to follow the laws that govern our division.



### QUESTION:

How is it that there are salary increases for faculty and not staff? I'm a bit tired of hearing salary increases are not available when some of us know that increases have been granted for others within our school. I understand budget constraints are an issue. But then give us other perks that don't backfire on us. Don't allow us to do a flexible schedule over the summer and then take it away in the fall.

### ANSWER:

Our University is operating under a single set of guidelines for compensation of faculty and staff as issued by the system and in compliance with current state law. And those guidelines no matter who it is do not allow an increase in the employee's total salary except in case of promotion or a special exception for retention of critical faculty or staff. According to policy, we're not allowed to give raises. I'm not defending it; I'm just restating the policy.



### QUESTION:

I know you are a big proponent of civility. I was maybe a half-block from the Saratoga Garage when I saw a man enter the door and let it close on a woman carrying an infant she had just picked up from daycare. The woman, who was maybe two or three steps behind the man, had to adjust her hold on her baby to free a hand to open the door. As it turned out, the three of us shared the elevator. When the woman got off, it was just me and the man who didn't hold the door. Which would have been more civil? Me saying something to the man for not holding the door or me saying nothing?



**ANSWER:**

First I compliment you on being a gentleman. I don't think it's so much challenging people, unless they are challenging you, as setting a good example. If people are going to change, they will only change from seeing people like you and me and everybody else who cares about this setting the right example.



**QUESTION:**

Where do things stand on the Westside Advisory Committee and also just general improvements? I know we got an email the other day saying that Panera Bread is coming and another email about Lexington Market and patrols. It seems like the pace is picking up, but I just wondered if you could summarize it for us.

**ANSWER:**

Well, thank you for saying that, particularly your remark that the pace is picking up. Your question is very timely. After this meeting I go and join the mayor in our quarterly meeting of the Westside Task Force. The pace is picking up, but it is never as fast as we would like it to be. But the fact that as a result of the Urban Land Institute consultation and the formation of a broad-based task force getting as many stakeholders as possible into the same room from private developers to city officials to state officials to the University, there is an effort to improve the common good for all of us on the Westside.

I think we're all in agreement we need to do something to improve Lexington Market. If you are a business owner on the Westside, a developer on the Westside, University people, residents, I can't imagine someone not saying, 'Let's make the Lexington Market better.' Thank you for this question. I think it's very important for the University to help support and create a vibrant, healthy Westside.



**QUESTION:**

How do I find information about reporting an ethics violation in my administrative unit?

**ANSWER:**

There are several ways. And again you can do it anonymously, you can do it confidentially. There are fraud hotlines that have been established. The campus has a new hotline for reporting fraud and ethics violations. It's run by an outside vendor called Ethics Point. We have a USM internal audit hotline. These are all posted on the website. The important point I think for this audience and for whoever asked this question is you should not sit back when you think something is being done that is wrong.



**QUESTION:**

There are two flagpoles on the east side of the University plaza that have not had flags flying on them for quite a while. Is there a reason why the U.S. and state flag are not being put up anymore?

**ANSWER:**

They are now up, I saw them yesterday. Sometimes the flags need to be replaced due to normal wear and tear. We try to keep spare flags on hand, but sometimes there is a lapse. Be assured there is no lack of commitment here about flying the colors.



**QUESTION:**

I know the electric bill is a major issue for the University. But at night and on weekends I see many, many lights on in empty labs and buildings. Could we regroup our efforts to turn off some of those lights and reduce the bill?

**ANSWER:**

I appreciate this question and it is indicative of many around our campus about the importance of thinking green. I think everyone should be vigilant about turning off lights. There are occupancy sensors in various buildings in corridors and offices or auditoriums. There is a master lighting program that controls this, but the questioner is absolutely right. It's fair to say we still have a long way to go.

Bob Rowan, associate vice president for facilities and operations: Our newer buildings have automation, but some of our older ones do not so as we update buildings we add automatic controls. Some occupants do not like sensors; they do not like to have to walk into a dark space; they don't like the delay. When they're sitting in their office and not moving, the lights go out. So there are various issues and we'll be moving forward on that.



**QUESTION:**

I'm writing concerning a building called the Grace and Hope mission on Greene Street. Since it's not currently being used, may I make a suggestion? Is there any possibility of utilizing this building for a field placement work site providing the homeless around the University a place to seek comfort and hope? Maybe if the VA joined the University and our schools we could help people in need.

**ANSWER:**

You have to admire the thought. In talking with leadership here, I think we would definitely consider the building for a placement program, but we have not yet received a proposal from one of our campus schools for such a program. If someone feels strongly about it, they should come forward with a proposal.



**QUESTION:**

Since the summer earthquake has a master plan been developed? During the earthquake we were made to evacuate and were standing outside for an hour and a half. After the fact we heard we probably would have been safer staying in the buildings and were at more risk standing outside.

**ANSWER:**

Dr. Perman: We tried to learn from this remarkable experience. I'll let Bob expand on this.

Bob Rowan, associate vice president for facilities and operations: The University did not have an earthquake policy prior to this. It was seen as such a low likelihood event that we didn't bother planning for it. Since then we are drafting a plan that probably will recommend 'shelter in place' because you are right it doesn't make sense to evacuate. You're safer inside. What happened on that day, however, was that many people pulled fire alarms, making evacuation mandatory. We didn't do a good job of training people in what to do, but we will improve in the future.

